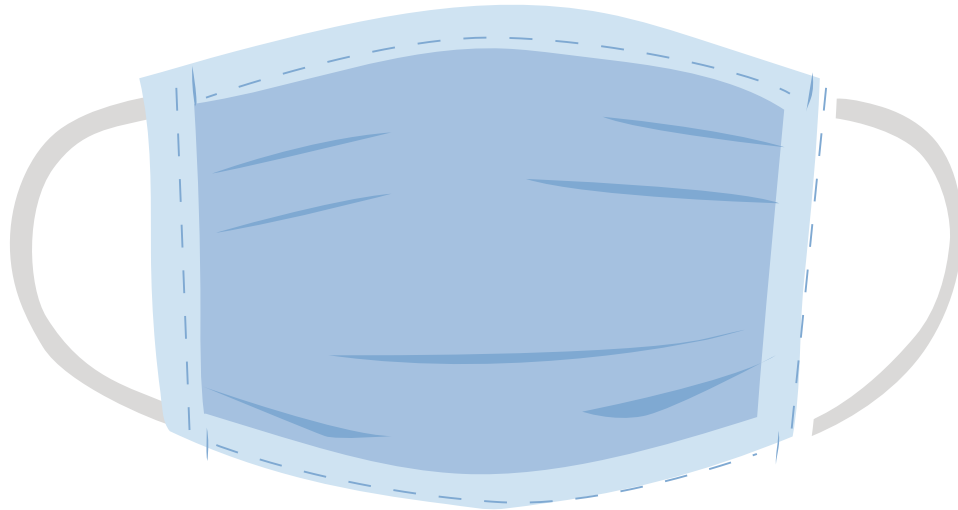


# MASKS REQUIRED FOR ENTRY



## **PER CITY OF COLUMBUS MASK ORDINANCE NO. 20-25 PASSED ON NOVEMBER 24, 2020**

All individuals age six and older must wear a mask when they are in an indoor space that is open to the public unless six feet of separation from others can be achieved at all times

### **Masks are not required for those:**

- \* Seated at a bar or restaurant while consuming food or beverages
- \* Engaged in exercise
- \* Engaged in an occupation that prevents the wearing of a mask
- \* Purchasing goods or services that require a mask be temporarily removed
- \* Speaking to an audience where six feet of distance is maintained
- \* Seeking state or county government services
- \* Individuals who cannot otherwise wear a face covering because of a medical condition, a mental health condition, or a disability that prevents the wearing of face coverings
- \* And as may otherwise be listed in the ordinance

**For more information, visit [www.columbusne.us](http://www.columbusne.us)**

